

ROTARY SCALE VALVES

TYPE RSV

- **IN-FLOW PRODUCT DIVERSION**
- **HEAVY DUTY CAST IRON CONSTRUCTION**
- **SIMPLE DESIGN**

Rotary scale valves are designed for in-flow product diversion directly from a pneumatic conveying system into bulk storage and weigh hoppers.

They are suitable for handling powders and granules in a wide range of industries.

The valve has a precision machined cast iron body and endplates. It is fitted with a cast iron precision machined vane, supported by bearings within the endplates and operated by a direct coupled pneumatic actuator. The valves are supplied complete with indicator switches and a solenoid operated spring return air control valve.

Rotary scale valves are available in two body sizes. The use of connecting tube adaptors enable them to be used in conveying systems from 1½" – 6" diameter.

The valves may be used with product flow from either direction.



BRITTON PROCOL VALVES

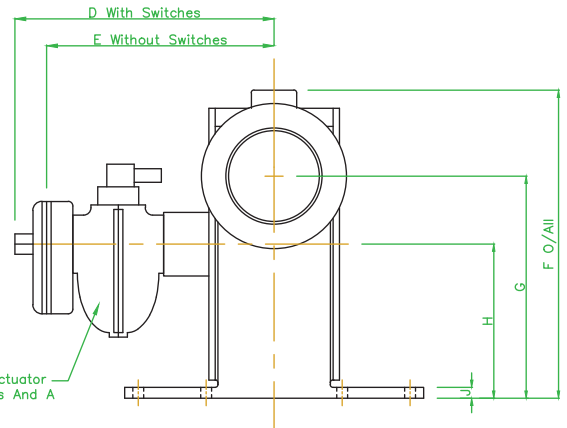
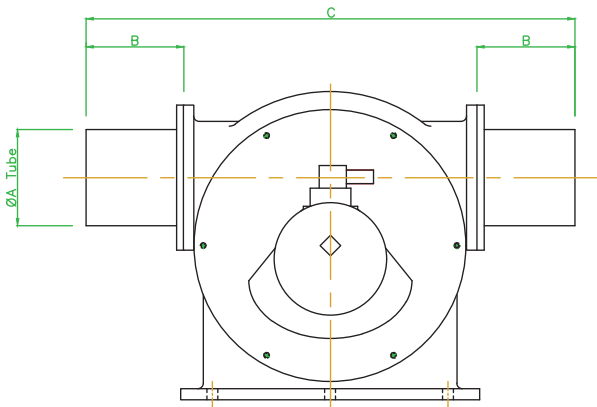
WRIGHTS DOWSON GROUP

*See over for
planning-in
dimensions*

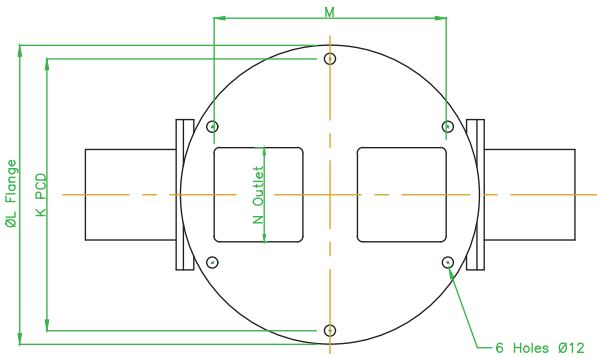
Kynochs Industrial Estate Bideford Devon EX39 4DT

T: 01237 477465 E: sales@brittonprocol.com

www.brittonprocol.com



Double Acting Pneumatic Actuator
With 2off Indicator Switches And A
NAMUR Air Control Valve



ROTARY SCALE VALVES

Connecting Tubes May Be O/Dia, Nominal Bore,
ASA Schedule Pipe Or Metric Specification.

VALVE SIZE	A	B	C	D	E	F	G	H	J	K	L	M	N
50	2"	150	624										
75	3"	150	624	300	240	340	245	170	12	300	330	256	104
100	4"	100	524										
125	5"	150	724	365	320	440	320	220	12	400	430	356	154
150	6"	150	724	365	320	440	320	220	12	400	430	356	154

We are continually developing our products and accordingly we reserve the right to change specifications and dimensions without prior notice.



BRITTON PROCOL VALVES

WRIGHTS DOWSON GROUP

Kynochs Industrial Estate Bideford Devon EX39 4DT

T: 01237 477465 E: sales@brittonprocol.com

www.brittonprocol.com